

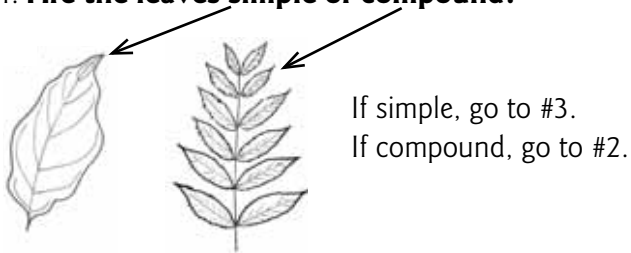


Tree Key

Instructions:

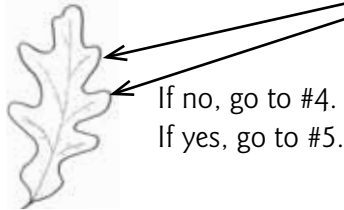
This basic key is limited to the five species included in the “Sample Trees.” Practice using this key until you understand how the questions are used to identify trees. Once you have “keyed” out all five tree species, compare your answers with your classmates.

1. Are the leaves simple or compound?



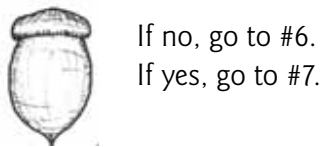
2. It is a black walnut, *Juglans nigra*

3. Are the edges of the leaf deeply lobed?



4. It is a flowering dogwood, *Cornus florida*

5. Are the fruits acorn-like?



6. It is a tulip poplar, *Liriodendron tulipifera*

7. Are the lobes of the leaves rounded or bristle-tipped?



8. It is a white oak, *Quercus alba*

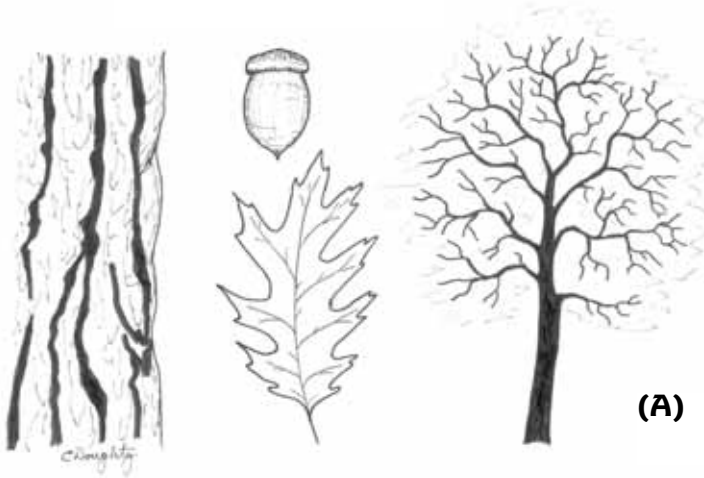
9. It is a Northern red oak, *Quercus rubra*



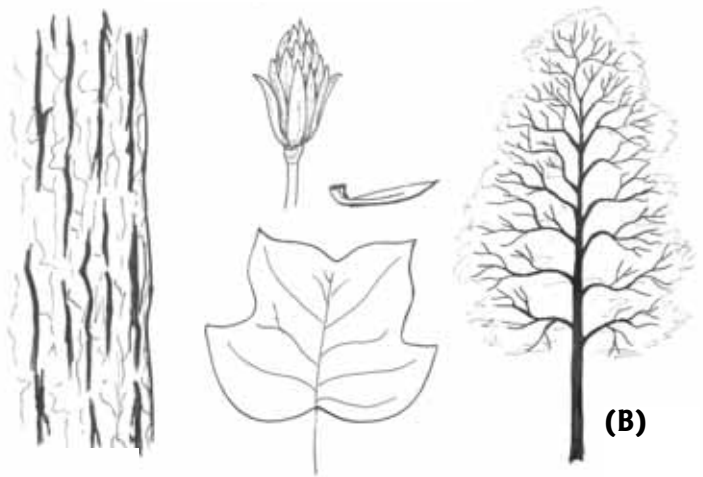
Tree Key- Sample Trees (con't)

Instructions:

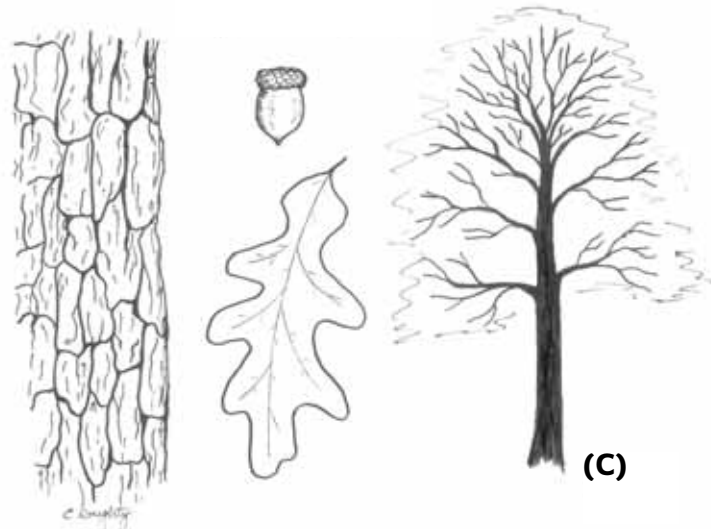
Look at the following tree species (including bark, leaf, seed, tree form) and key them out using the "Tree Key".



(A)



(B)



(C)



Tree Key- Sample Trees (con't)

