

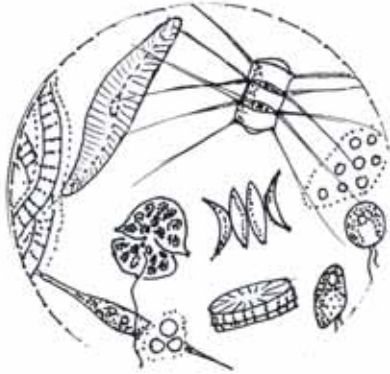


## Potomac River Food Web Cards

### Instructions

Cut out the cards along the large dotted line and fold in half.

### ALGÆ



Description: Simple living **organism** that grows in water bodies

Diet: Uses sunlight, water, and nutrients to make its own food

### COPEPODS



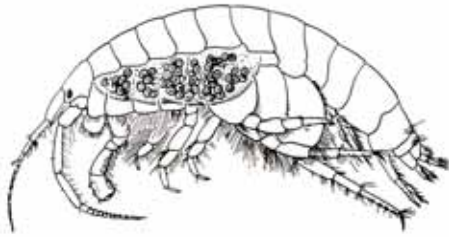
Description: Very small **crustaceans** that live in water bodies

Diet: Algae; grasses; **phytoplankton**



## Potomac River Food Web Cards (con't)

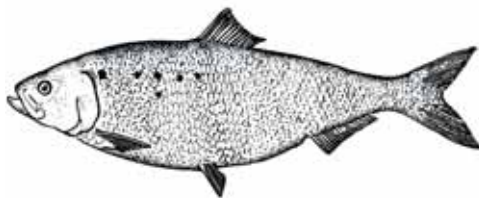
### AMPHIPODS



Description: Small, shrimp-like **crustaceans**; can be either **aquatic** or **terrestrial**

Diet: Algae; grasses

### AMERICAN SHAD



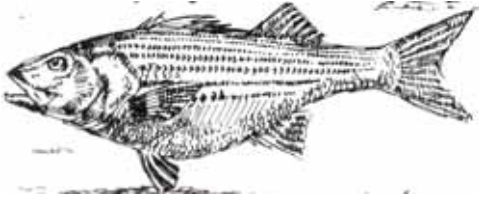
Description: A **species** of fish common to the Potomac River; the largest member of the herring family and the most well known of the six species of shad found in the Chesapeake Bay watershed

Diet: **Copepods**; **zooplankton**; **amphipods**; insects



## Potomac River Food Web Cards (con't)

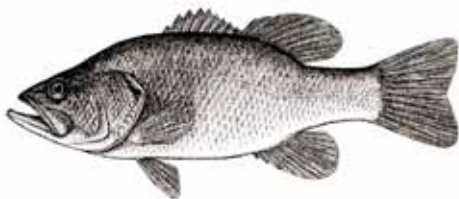
### STRIPED BASS



Description: A **species** of fish common to the Potomac River; a member of the bass family

Diet: **Copepods; zooplankton; amphipods;** fish; crabs

### LARGEMOUTH BASS



Description: A **species** of fish common to the Potomac River; actually a member of the sunfish family

Diet: Insects; **copepods; zooplankton;** fish; **crustaceans;** frogs; small ducklings; almost any animal of appropriate size



## Potomac River Food Web Cards (con't)

### BALD EAGLES



**Description:** A large bird of **prey**; most commonly recognized for its role as the national bird of the United States

**Diet:** Fish; injured water birds; turtles

### GREAT BLUE HERON



**Description:** A species of bird that can often be found wading in water; the largest **species** of North American herons

**Diet:** Small snakes; insects; mice; fish; frogs; lizards; salamanders; shrimps; crabs; crayfish; grasshoppers; smaller birds